

SANT ISHAR SINGH JI MEMORIAL PUBLIC SCHOOL KARAMSAR RARA SAHIB

Holidays Homework

CLASS- 8th

Dear Parents,

“We should live everyday like it is a holiday, being thankful and spending time with family and looking hopefully to the future”.

There is no doubt that vacations are the most appropriate time for the students to refresh and rejuvenate themselves to showcase their performance more enthusiastically. Children have ample energy which needs to be channelized in the right direction to get the best out of them.

Keeping this in mind the holidays homework has been designed to make them more observant and confident. Students must remember to complete all their Homework and submit it to the respective teachers upon their arrival at the school after vacations. School will re-open on 1st July 2024.

General Instructions:-

1. Get up early in the morning and go out for a walk daily.
2. Listen to news daily and read the news headlines.
3. Watch National Geographic, History and Discovery channels to enrich your general knowledge.
4. Subject based questions must be done in Holidays Homework Notebooks.
5. Show your best creativity and make colorful projects. Use good quality sketch pens or glitter pens for writing headings only, text should be handwritten with blue or black pen.

Time Table must be made. Holidays Homework must be done over the period of one month. Don't consider Holidays Homework as a burden.

Subject: Divinity

Holiday homework

ਜਪੁਜੀ ਸਾਹਿਬ ਤੇ ਚੌਪਈ ਸਾਹਿਬ ਦੇ ਰੋਜ਼ਾਨਾ ਪਾਠ ਕਰਨੇ।

ਦਸਾਂ ਗੁਰੂਆਂ ਦੇ ਜੀਵਨ ਬਾਰੇ ਵਿਸਥਾਰਪੂਰਵਕ ਜਾਣਕਾਰੀ ਹਾਸਲ ਕਰਨੀ।

Subject- English

Reading Passage- CA -3,CA-4,CA-5

Writing- Factual Description PA -10 (Railway Station),CA -17(Mahendra Singh Dhoni)

Synonymous CA 104

Antonyms CA 105

Speaking Topic - Importance of extra-curricular activities in School

Art Integrated Project- Write about a particular water body(river) in Orrisa and Punjab and how that river is being polluted. Paste picture of both polluted rivers.

Subject: Science

Revise chapter 1,2,3,4

Chart nitrogen cycle

Make a note on fossil fuel in 200 words

Picture demonstration of crops with examples

Art integration project

Use A4 sheets

Social Science

Class-8

1. Locate the factories and agencies of the European companies in India, 1705 on the political map of India.
2. Prepare a beautiful chart and write the Preamble in the beautiful handwriting on it.
3. Try to investigate the problems of Indian farmers on assignment sheets.
4. Complete the question answers of chapter 1 and 2 of Civics, which is done in online classes.

SUBJECT-MATHS

1. Complete worksheet of Ch- 4(Data Handling) on assignment sheets.
2. Do complete assignment of Ch- 13(Introduction to graph)
3. Revise Ch- 1,2,4,7,13 for UT exams.
4. Prepare a pie chart on Contribution of air pollution, noise pollution, and water pollution in total pollution for the data collected from year 2023,for comparison of States Punjab and Odisha separately .Project must be
 - Neat and clean
 - Colourful
 - Attractive
 - Contains Student's name, Roll no., Class, Subject, Submitted to, Submitted by,
 - Attractive front page with proper topic name
 - Introduction of the topic.

Class- 8

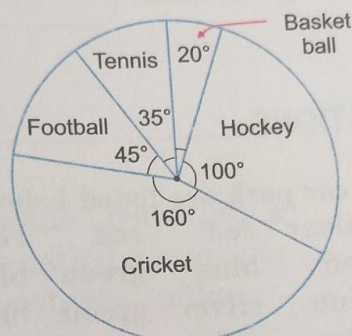
Subject-Maths

Ch- 4(Data Handling)

Worksheet

1. Find the probability of selecting a vowel from the English alphabets.
2. The possible probability of happening an event is.... ..
3. Sum of all central angles in a pie chart is.....
- 4.

The pie chart given below represents the amount spent on different sports by a school administration in a calendar year.



If the money spent on football is ₹ 9000, answer the following questions :

- (i) What is the total amount spent on sports ?
- (ii) How much more amount is spent on hockey than on football ?
- (iii) What is the amount spent on cricket ?

5. The data on mode of transport used

by students to come to school are given below :

Mode of transport	No. Of students
Bus	120
Cycle	180
Train	240
Car	80
Scooter	100

Draw a pie chart to depict the given data.

6. Write the possible outcomes if a die is thrown once.
7. A die looks like a cuboid.(T/F)
8. If a die thrown, getting a number..... than 7 is a sure event.
9. A bag containing 7 red marbles, 8 green marbles, and 3 blue marbles. Find the probability of drawing a marble which is not green.
10. Match the following columns.

Column A

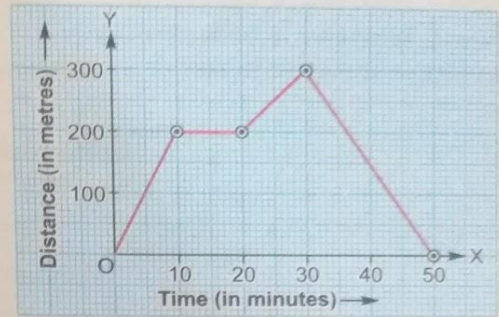
Column B

- | | |
|---|-------------------------------------|
| (a) Sum of all central angles in a pie chart | (p) $\frac{1}{6}$ |
| (b) Chance of being Friday tomorrow, if today is Saturday | (q) 1 |
| (c) Probability of getting 2, when a die is thrown | (r) No |
| (d) Probability of getting 9, when a die is thrown | (s) 360° |
| (e) Probability that a number less than 7 will appear on the top, if a die is thrown | (t) 0 |

Assignment
Ch- 13(Introduction to graph)

1. Multiple Choice Questions (MCQ) Choose the correct option.

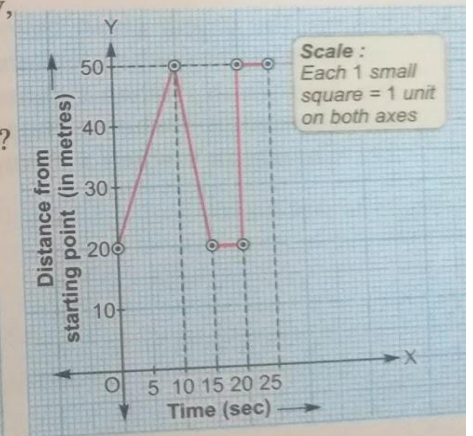
Observe the 'Time-Distance' graph given alongside carefully and answer the following :



- (i) The object was stationary for
 - (a) 5 minutes
 - (b) 15 minutes
 - (c) 20 minutes
 - (d) 10 minutes
- (ii) The object started back journey from a distance of
 - (a) 100 m
 - (b) 200 m
 - (c) 300 m
 - (d) 250 m
- (iii) Time taken to reach the distance of 80 m is
 - (a) 5 minutes
 - (b) 4 minutes
 - (c) 3 minutes
 - (d) 45 minutes
- (iv) At what distance the object became stationary ?
 - (a) 100 m
 - (b) 150 m
 - (c) 300 m
 - (d) 200 m

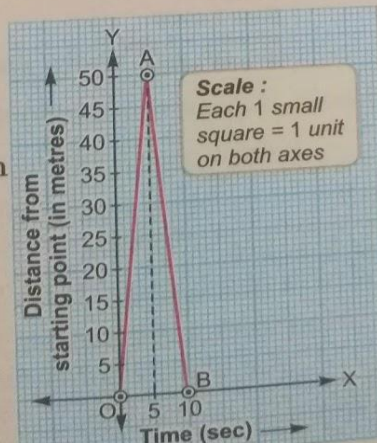
2. In the adjoining distance-time graph of a body, find :

- (i) speed between 0 to 10 seconds.
- (ii) at what time interval speed is zero ?
- (iii) at what time, speed is abruptly too high ?
- (iv) total distance travelled by the body in 25 seconds.



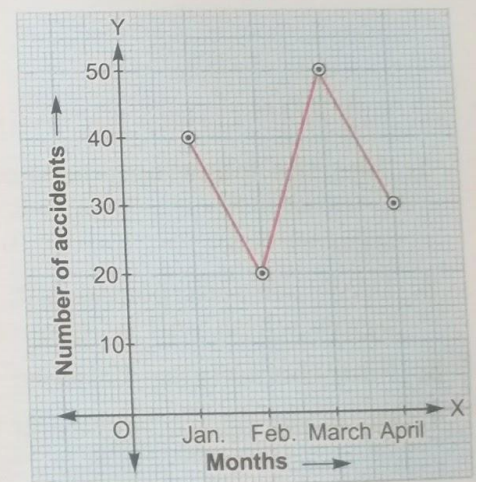
3. In the following distance vs time graph :

- (i) find average speed between 0 to 10 sec.
- (ii) find speed between 0 to 5 sec.

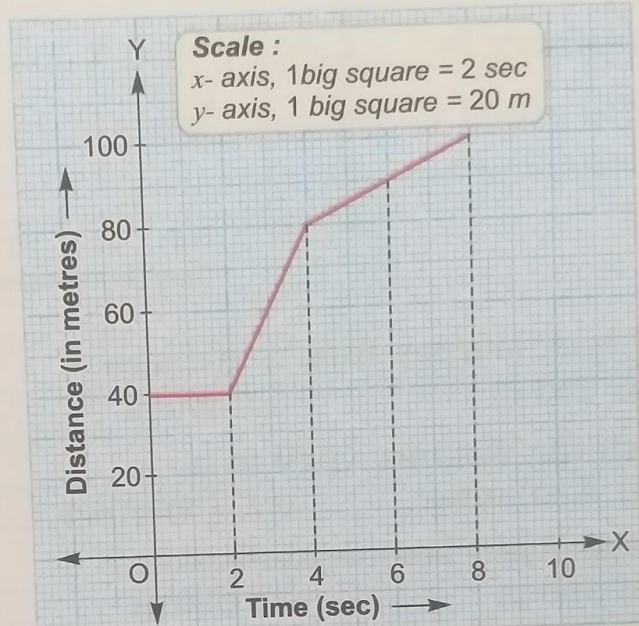


4. Look at the graph given alongside and then decide whether each of the following is true or false :

- (i) The number of accidents is highest in April.
- (ii) The number of accidents fell 50% in February as compared to that in January.
- (iii) The number of accidents increased 3 times in March as compared to that in February.



5. By observing the distance versus time graph given below, find :
- speed between 0 to 2 seconds.
 - speed between 2 to 4 seconds.
 - speed between 4 to 8 seconds.
 - average speed between 0 to 8 seconds.



ਵਿਸ਼ਾ - ਪੰਜਾਬੀ

Holiday Homework

- ਲੇਖ - 1. ਵਿਸਾਖੀ ਦਾ ਮੇਲਾ
- ਵਧ ਰਹੀ ਆਬਾਦੀ ਇੱਕ ਸਰਾਪ
 - ਅਖਬਾਰਾਂ ਦੇ ਲਾਭ ਹਾਨੀਆਂ
 - ਪ੍ਰਦੂਸ਼ਣ ਦੀ ਸਮੱਸਿਆ
 - 15 ਅਗਸਤ
 - ਸਵੇਰ ਦੀ ਸੈਰ

ਕਹਾਣੀ - 1. ਉਪਕਾਰ

- ਲਾਲਚੀ ਕਿਸਾਨ
- ਸਾਰਸ ਤੇ ਲੁੰਬੜੀ

ਅਰਜ਼ੀ / ਪੱਤਰ - 1. ਜੁਰਮਾਨਾ ਮੁਆਫ਼ੀ ਲਈ ਅਰਜ਼ੀ।

- ਟੀ. ਵੀ. ਦੇ ਨੁਕਸਾਨ ਬਾਰੇ ਦੱਸਦੇ ਹੋਏ ਪੱਤਰ
- ਛੱਤਬੀੜ ਚਿੜੀਆਘਰ ਦੇਖਣ ਦੀ ਆਗਿਆ ਲਈ ਪੱਤਰ।

ਨੋਟ - ਇਹ ਸਮੁੱਚਾ ਲਿਖਤੀ ਕੰਮ ਆਪਣੀ ਪੱਕੀ ਕਾਪੀ ਉੱਤੇ ਲਿਖਣਾ ਅਤੇ ਯਾਦ ਕਰਨਾ ਹੈ।

Assignment:- 'ਛਿੰਝ ਕਰਾਹਾਂ ਦੀ' ਪਾਠ ਬਾਰੇ ਜਾਣਕਾਰੀ ਇਕੱਠੀ ਕਰਕੇ ਤਸਵੀਰਾਂ ਸਹਿਤ assignment ਤਿਆਰ ਕਰੋ।

Art integrated project:- ਪੰਜਾਬ ਅਤੇ ਓਡੀਸ਼ਾ ਦੇ ਪ੍ਰਦੂਸ਼ਣ ਦਾ ਤੁਲਨਾਮਿਕ ਅਧਿਐਨ ਕਰਦੇ ਹੋਏ ਤਸਵੀਰਾਂ ਸਹਿਤ ਪ੍ਰੋਜੈਕਟ ਤਿਆਰ ਕਰੋ ਜਿਸ ਵਿੱਚ ਦੋਨਾਂ ਰਾਜਾਂ ਦੇ ਪ੍ਰਦੂਸ਼ਣ ਨੂੰ ਦਰਸਾਇਆ ਗਿਆ ਹੋਵੇ।

Subject Hindi

ਗ੍ਰੀਸ਼ਮ ਅਵਕਾਸ਼ ਕਾਰ्य

कक्षा आठवीं

1. सर्वनाम ,अनेकार्थी (1-35),उपसर्ग और प्रत्यय के कोई (20-20)शब्द, विराम चिह्न ,जुर्माना माफ़ी के लिए पत्र ,दादा की बीमारी के बारे में बताते हुए पिताजी को पत्र लिखें
नोट उपर्युक्त कार्य अपनी उत्तर पुस्तिका पर लिखें।

2 पंजाब और उड़ीसा के प्रदूषण पर आर्ट इंटीग्रेटेड एक्टिविटी तैयार करें
संकेत बिंदु -1 भूमिका

2 पंजाब के प्रमुख प्रदूषित गांव और शहर और उन में प्रदूषण के कारण

3 उड़ीसा के प्रमुख प्रदूषित गाँव और शहर और उन में प्रदूषण के कारण

4 उपसंहार और सरकार द्वारा उठाए गए कदम

Subject: Computer

Learn Lesson 1 Networking Concept

Learn Lesson 3 Log to Access

Prepare chart of different Type of Networking (A4 Sheet)

Art and Craft

(A4 sheet)

1. Fruit Basket (Gel pen and shading)

2. Landscape (watercolor)

3. Save Water poster

4. Waste material craft

Subject -GK

Write and learn all the following general full forms

NCR, PCS, CAT, IPL, NEET, TDS, CID, DP, MLA, TRP , SSP&DSP (POLICE)

GATE ,UPSE ,IAS , ICSE, RBI, DP, TRP , ICSE, ITI, RBI ,NASA , ,PCS, SSC ,ATM ,

DNA, PHD, ED, MBBS ,ICU,BPO ,WIFI, OPD ,PWD

Name and paste the pictures of any five famous places of India

And five famous places of the world

Note -do all this in your fair notebook

Learn all the chapters of April and May month mentioned in the syllabus